

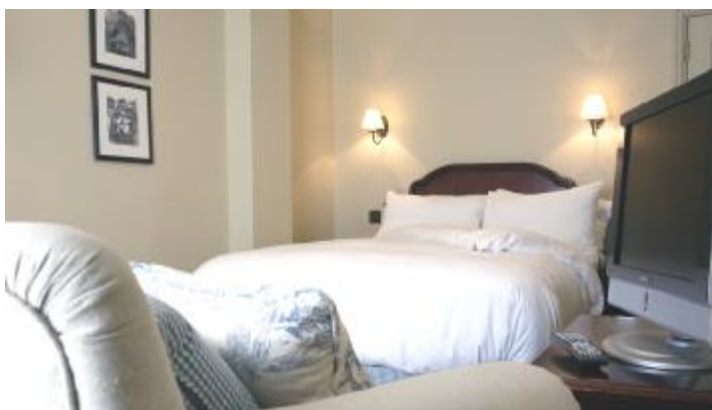
# The Angel Hotel



The Angel Hotel was once a great coaching inn on the London to Fishguard route. Now privately run by Caradog Hotels, stylish refurbishment is restoring the hotel to its former glory, and friendly, attentive service is of paramount importance. Set at the heart of the bustling market town of Abergavenny, on the edge of the Brecon Beacons, the hotel is graded AA three stars and the cuisine has an AA rosette.



There are 31 en-suite guest rooms, each with television, telephone, free Wi-Fi internet connection, tea/coffee facilities, hair-dryer and toiletries. These include a four-poster bedroom and a number of refurbished rooms (with Villeroy & Boch bathrooms and flat-screen TV/DVD players). In addition there is the Lodge, in the grounds of Abergavenny Castle, just a hundred yards from the hotel, which is perfect for up to four guests. Overnight shoe-shine is complimentary, and guests have free use of nearby Keepers Fit gym.



Elegant and adaptable, there are three function rooms for corporate clients, suitable for meetings, conferences, training courses, and banquets up to 120 people.

The Restaurant and sheltered Courtyard (open throughout the Summer) are very popular dining venues, and for more relaxed eating there is the Foxhunter Bar, with a welcoming log fire in Winter. Afternoon tea in the Sitting Room is a speciality, with freshly-baked cakes, bone china and crisp linen.



The team of chefs use good, local produce, including Welsh meat, organic vegetables and free-range eggs. The list of around 100 wines offers six by-the-glass, and has gained 'Awards of Excellence' every year since 2005 from the world's top wine magazine, Wine Spectator - just 22 UK awards, only two in Wales.

For the very latest information please visit [www.angelhotelabergavenny.com](http://www.angelhotelabergavenny.com)

# Delegate Packages

We offer all-inclusive packages for delegates, which can be tailored to suit your exact requirements. Alternatively, you may hire a room plus any equipment and refreshments you specify. Note all prices are quoted exclusive of VAT.

The basic elements of the packages are:

- ◆ Meeting room, set up to your chosen layout.
- ◆ Flipchart and markers.
- ◆ Data projector and screen.
- ◆ TV and video (on request).
- ◆ Wireless broadband connection.
- ◆ Notepaper and pen for each delegate.
- ◆ Place cards.
- ◆ Conference tool kit (i.e. drawing pins, stapler, hole puncher, sticky tape, etc.).
- ◆ Mineral water and cordials.

**The full-day delegate package:** £43.00 per person (minimum 10).

This package has the basic elements plus:

- ◆ Tea, coffee, on arrival, and with Welsh cakes, mid-morning.
- ◆ Two-course lunch with vegetarian options. Or, we can provide a buffet.
- ◆ Afternoon tea, coffee with a selection of home-made cakes and scones.

**The 24-hour delegate package:** £135.00 per person (minimum 10).

This package has the basic elements plus:

- ◆ Three-course dinner with vegetarian options.
- ◆ En-suite accommodation in standard double/twin rooms for single occupancy, including shoe-shine, and full English or continental breakfast. Superior rooms available.
- ◆ Tea, coffee and Welsh cakes, mid-morning.
- ◆ Two-course lunch with vegetarian options. Or, we can provide a buffet.
- ◆ Afternoon tea, coffee with a selection of home-made cakes and scones.

# Delegate Packages

**The half-day delegate package:** £32.00 per person (minimum 10).

This package includes the basic elements plus:

- ◆ Tea, coffee and Welsh cakes, mid-morning or mid-afternoon.
- ◆ Two-course lunch with vegetarian options, at the start or finish of the session. Or, we can provide a buffet.

**The breakfast meeting package:** £15.00 person (minimum 10).

This three-hour package includes the basic elements plus:

- ◆ Full English and continental breakfast buffet, served from 7.00 - 9.00am. with fresh fruit juices, tea and coffee.

## Room Hire

We are happy for you to simply hire one of our meeting rooms. These prices are exclusive of VAT.

Hire of a meeting room, set up to your chosen layout.

- ◆ Brecon Suite: £80.00 per four hours.
- ◆ Wedgewood Room: £100.00 per four hours.
- ◆ The Ballroom: £150.00 per four hours.

With the room there are additional items you can select. Details on page four.

# Equipment Hire

With the room you can also hire the following. Prices here are inclusive of VAT.

Flipchart and markers: £25.00

Screen: £20.00

TV and video: £32.00

Data projector: £.92.00.

Wireless broadband connection: free.

Place cards, notepaper and pen for each delegate: £3.00

Conference tool kit (i.e. drawing pins, stapler, hole puncher, sticky tape, etc.): £25.00

N.B. Other presentation aids can be hired. Please ask for a quote.

# Catering

If you hire a room, refreshments and meals can be ordered separately for your meeting. These prices are quoted inclusive of VAT.

30cl. Mineral water: £1.40    75cl. Mineral water: £3.00

Freshly-squeezed orange juice: £14.40 per jug (serves six glasses).

Coffee or tea: £2.90 per person.

Coffee or tea, with Welsh cakes(2): £3.90 per person.

Coffee or tea, with home-made biscuits(3): £4.10 per person.

Bacon rolls: £2.70    Two Danish pastries: £2.80

Afternoon tea, coffee with a selection of sandwiches, home-made cakes and scones: £12.90 per person.

Two-course lunch, with vegetarian options, in the restaurant (maximum 20): from £15.50 per person.

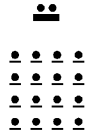
Or, we can provide a buffet lunch in the meeting room: from £15.50 per person (minimum 10 persons). For under 10 persons, we offer a selection of sandwiches and hand-made chips: £7.00 per person.

# Room Plans

**BRECON SUITE**

**WEDGEWOOD ROOM**

**THE BALLROOM**



THEATRE

35

80

180

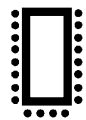


CLASSROOM

n/a

30

60

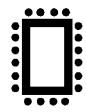


U-SHAPE

n/a

25

50

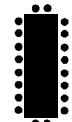


HOLLOW SQUARE

n/a

36

58

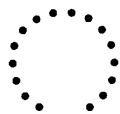


BOARDROOM

20

30

50

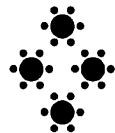


OPEN CIRCLE

20

50

80



BANQUET

n/a

50

120



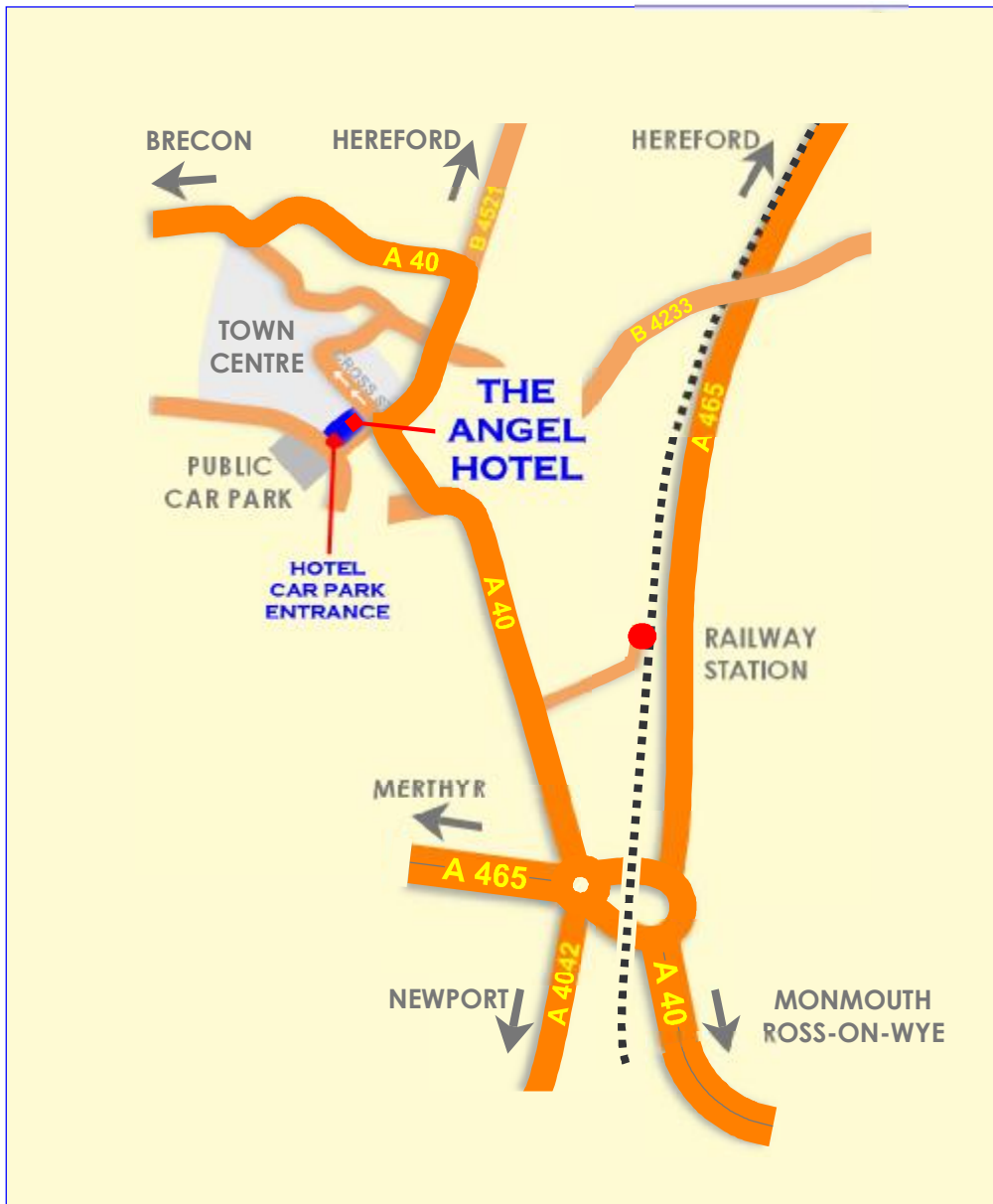
RECEPTION

40

80

180

# Location



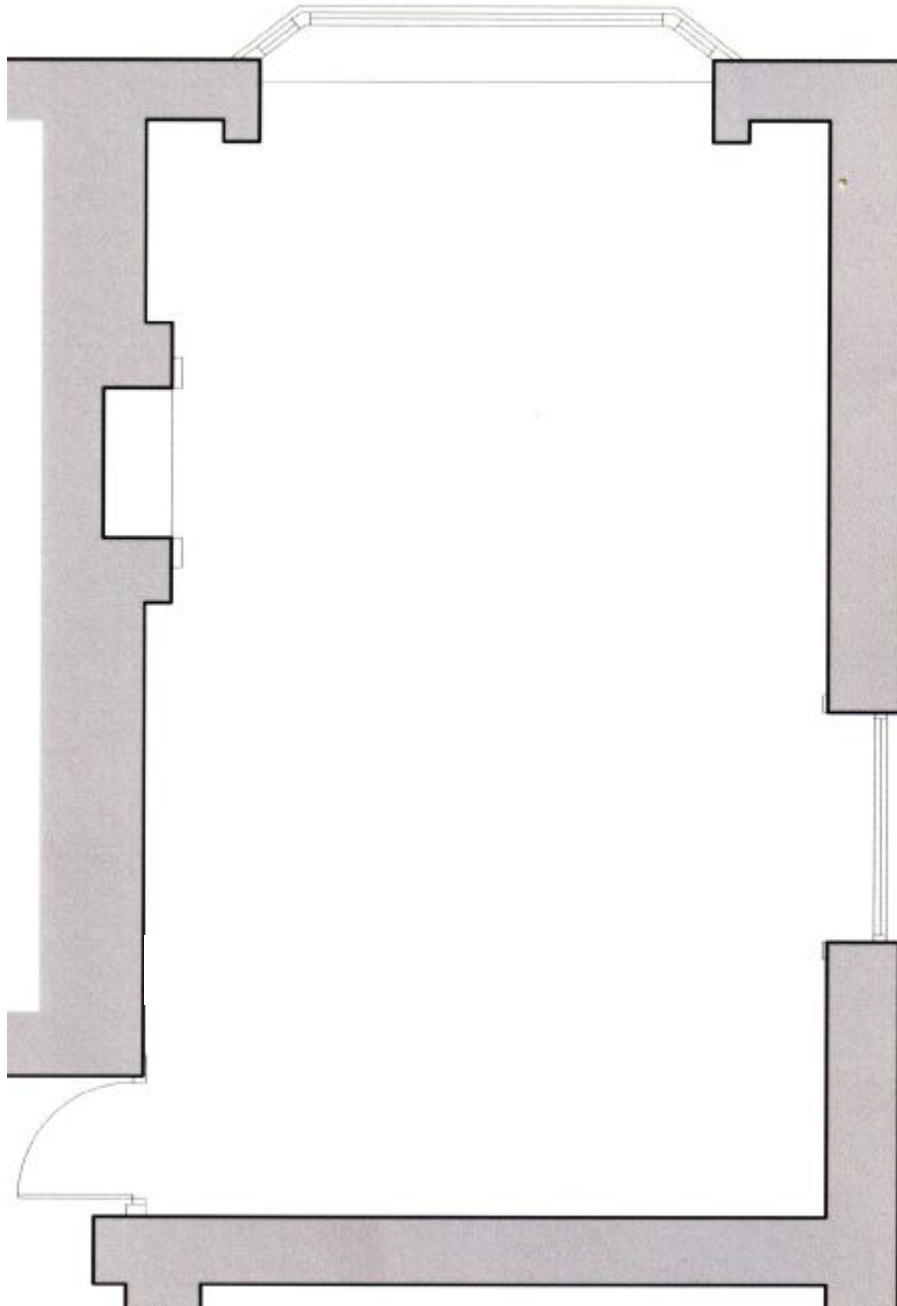
Abergavenny sits on the South-East edge of the Brecon Beacons. By train there is a mainline railway station, just south of the town, coming from London and Cardiff via Newport, and the North via Hereford. It's a ten minute walk. But with luggage, book a taxi to collect you. We recommend the reliable...Sheila's Taxis, 01873 857954.

There is an excellent network of roads to Abergavenny. You get here from the Midlands via Ross-on-Wye on the M50, or from London and the East, via the Severn bridges, on the M4. Leave the M4 at junction 24, and go North on the A449 up to Raglan, and then West on the A40 to Abergavenny.

You'll approach Abergavenny on the A4042 from the South, the A465 from the West and North, or the A40 from the East. These roads meet at a roundabout just south of the town. Take the A40 signposted to Abergavenny. Soon after the start of the shops the traffic can turn sharp left or right. Turn left into a narrow road immediately alongside The Angel Hotel. The hotel car park is the next turning on your right. If it is full, you may drop off your passengers and park in the modestly-priced public car park opposite.

# The Brecon Suite

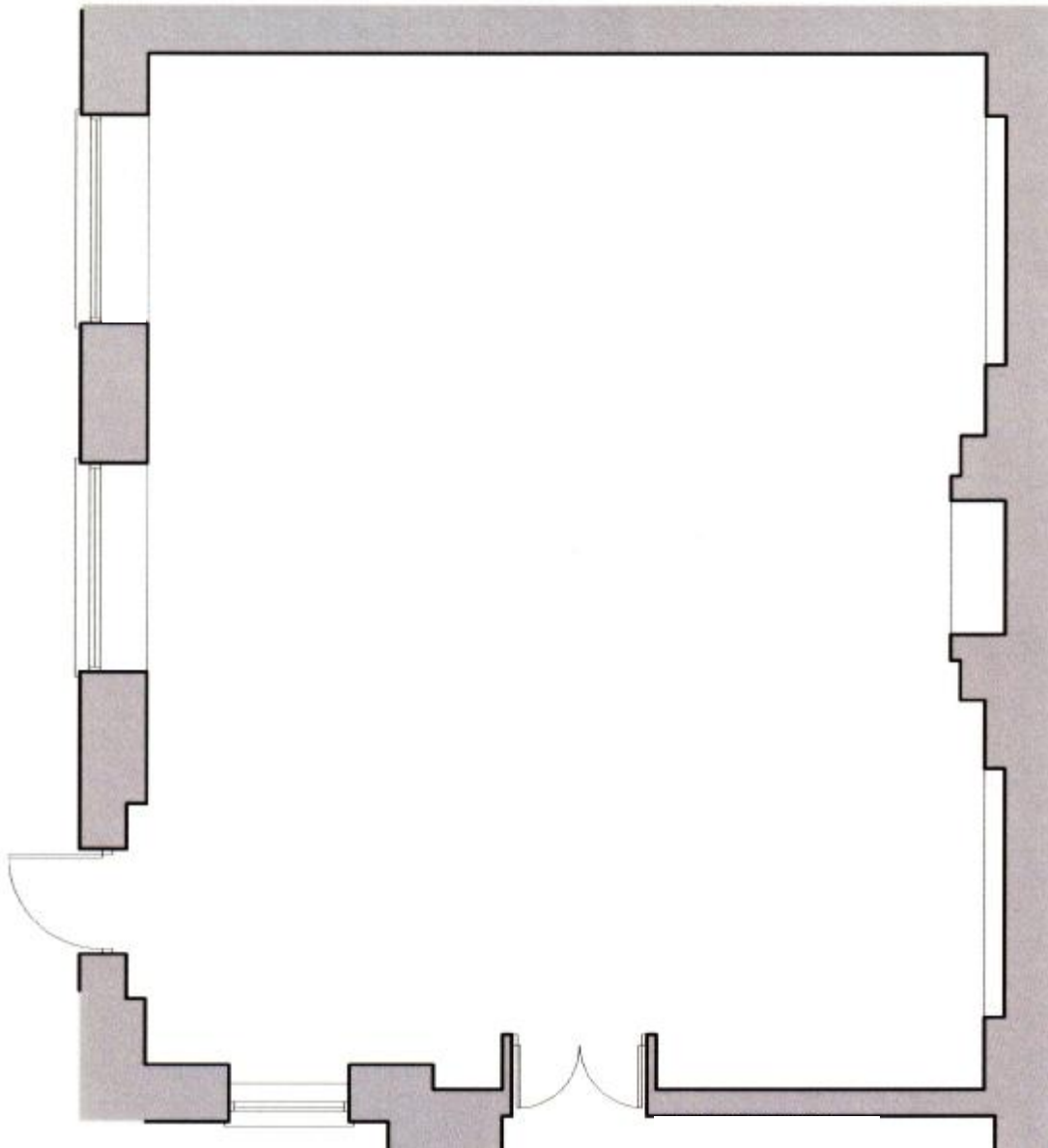
The Brecon Suite is a recently re-furbished room, on the first floor overlooking the town and the Skirrid mountains. It has plenty of natural light, supplemented by dimmable halogen lighting, and is air-conditioned. Suits well for private luncheons and dinners and boardroom meetings.



20' x 15' 300 sq. ft.  
6.1m. x 4.8m. 27.8 sq. m.  
Ceiling:10'

# The Wedgewood Room

The Wedgewood Room is on the ground floor with easy access from the car park. It is recently re-furbished too, with air-conditioning. It has natural light, but is mainly lit by a controllable Halogen system.



30' x 30' 900 sq. ft.  
9.1m. x 9.1m. 83.5 sq. m.  
Ceiling: 10'

# The Ballroom

The spacious Ballroom, on the first floor, (but with its own level entrance from the car park) covers a large area, with a balcony, and a high ceiling. It has its own bar, and is suitable for elegant parties and receptions, as well as large catered functions.

